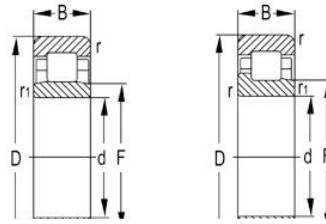
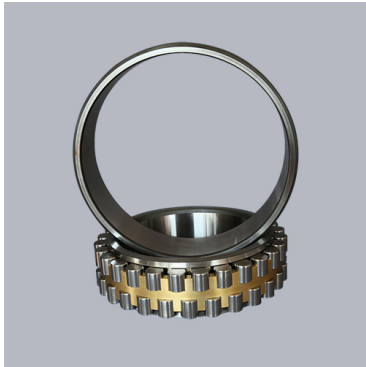


NF300 Series



| Выбрать | Запрос | Обозначение | Основные размеры (мм) | | | | | | Базовая грузоподъемность (кН) | | Ограниченная скорость (об / Вес мин) |
|---------|--------|-------------|-----------------------|-----|-----|--------|--------|-------------------|-------------------------------|-------------------|--------------------------------------|
| | | | d | D | B | rs min | rs1min | Динамический (Cr) | Статический (C0p) | Смазка Масло (кг) | |
| NF303E | 17 | 47 | 14 | 1 | 0.6 | 24.65 | 21.16 | 13000 | 15000 | 0.139 | |
| NF304E | 20 | 52 | 15 | 1.1 | 0.6 | 23.1 | 19.2 | 14000 | 17000 | 0.149 | |
| NF305E | 25 | 62 | 17 | 1.1 | 1.1 | 38.5 | 35.8 | 9000 | 12000 | 0.24 | |
| NF306E | 30 | 72 | 19 | 1.1 | 1.1 | 49.2 | 48.2 | 8000 | 10000 | 0.38 | |
| NF307E | 35 | 80 | 21 | 1.5 | 1.1 | 62 | 63.2 | 7000 | 9000 | 0.54 | |
| NF308E | 40 | 90 | 23 | 1.5 | 1.5 | 76.8 | 77.8 | 6300 | 8000 | 0.65 | |
| NF309E | 45 | 100 | 25 | 1.5 | 1.5 | 93 | 98 | 5600 | 7000 | 0.95 | |
| NF310E | 50 | 110 | 27 | 2 | 2 | 105 | 112 | 5300 | 6700 | 1.2 | |
| NF311E | 55 | 120 | 29 | 2 | 2 | 128 | 138 | 4800 | 6000 | 1.61 | |
| NF312E | 60 | 130 | 31 | 2.1 | 2.1 | 142 | 155 | 4500 | 5600 | 1.94 | |
| NF313E | 65 | 140 | 33 | 2.1 | 2.1 | 170 | 188 | 4000 | 5000 | 2.42 | |
| NF314E | 70 | 150 | 35 | 2.1 | 2.1 | 195 | 220 | 3800 | 4800 | 2.9 | |
| NF315E | 75 | 160 | 37 | 2.1 | 2.1 | 228 | 260 | 3600 | 4500 | 3.59 | |
| NF316E | 80 | 170 | 39 | 2.1 | 2.1 | 245 | 270 | 3400 | 4300 | 3.9 | |
| NF317E | 85 | 180 | 41 | 3 | 3 | 265 | 280 | 3200 | 4000 | 5.2 | |
| NF318E | 90 | 190 | 43 | 3 | 3 | 290 | 320 | 3000 | 3800 | 6.17 | |
| NF319E | 95 | 200 | 45 | 3 | 3 | 320 | 350 | 2800 | 3600 | 6.92 | |
| NF320E | 100 | 215 | 47 | 3 | 3 | 355 | 380 | 2600 | 3200 | 8.24 | |
| NF321E | 105 | 225 | 49 | 3 | 3 | 390 | 420 | 2200 | 3000 | 9.9 | |
| NF322E | 110 | 240 | 50 | 3 | 3 | 415 | 470 | 2000 | 2800 | 11.2 | |
| NF324E | 120 | 260 | 55 | 3 | 3 | 440 | 552 | 1900 | 2600 | 14.1 | |